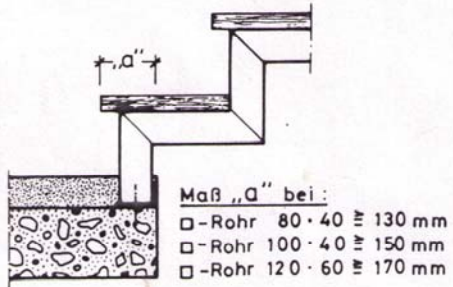
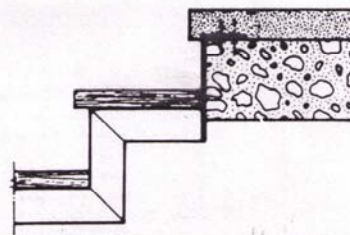


Treppenstudio Rauch, Bremen

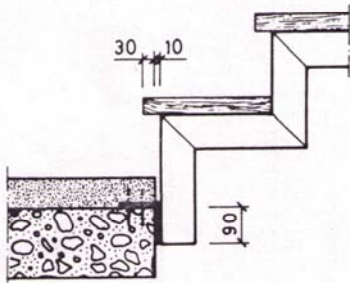
U1 Antritt „Aufsetzen“



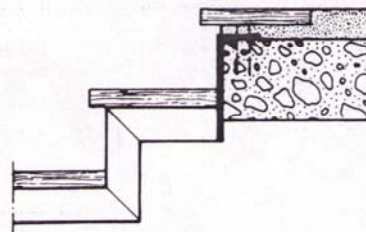
O1 Austritt „Flacheisen“



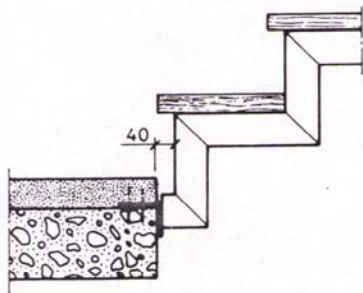
U2 Antritt „Vorschuhen“



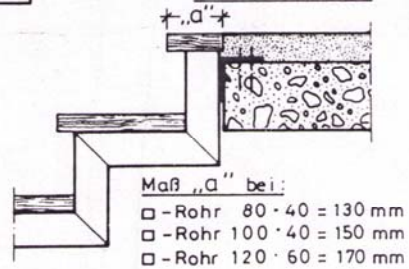
O2 Austritt „Flacheisen“
incl. Endstufe



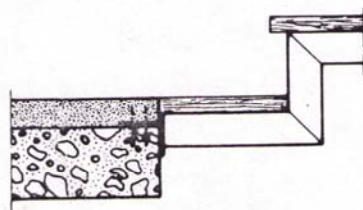
U3 Antritt „Vorschuh“ 40 mm



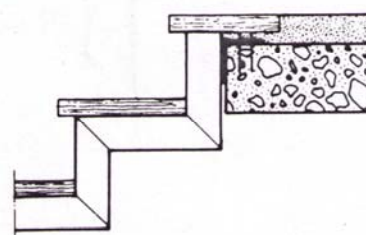
O3 Austritt „Halbe Stufe“



U4 Antritt „Vorschuh“
Stufe oder Podest



O4 Austritt „Volle Stufe“



O5 Austritt „Stufe od. Podest“

